

# CURRICULUM BOOKLET 2024-25



OUR SCHOOL VALUES

# Aspire ACHIEVE Thrive

**YEAR 11 THE TERM AHEAD**  
for students, parents and carers

# THE TERM AHEAD



As we come to the end of our first half term, we wanted to share some reflections on this year so far, but also look forward to the term ahead. This is our new curriculum newsletter for parents which details what your child can expect in the term ahead, as well as what they will be studying in lessons. We know that parental engagement can have a positive impact on a child's progress, outcomes and success, both in terms of their academic achievements but also their personal development. We hope this newsletter enables parents to know a little more about what their child is doing each day in school; to promote engaging conversations at home about topics they are learning about; to help revision on the run up to assessments; and to provide a stronger link between school and home.

Your child's tutor is always your first point of contact, so we have included their details within this booklet, as well as the clubs that are available and a reminder of the homework timetable and some examples of excellent homework.

These curriculum newsletters will be sent out to parents/carers before the end of each term, outlining the coverage for the term ahead. The next booklet will be sent in December and cover the whole of the Spring Term; then again in March to cover the Summer Term.

We've had a fantastic start to the academic year and we're looking forward to continuing this after October half term.

I hope you all have a lovely half term.

**Mr Oakes**  
Head of School

As we move quickly towards the end of this first term in year 11. The students have been working exceptionally well to prepare themselves for the next round of Mock examinations, that start on the 25th of November.

Year 11 have shown an exceptional work ethic towards their studies and embraced their period 6 lessons, some have started to take full advantage of the Champions hour to do revision and stay on top of their homework.

Some Students who have completed their Pearson Set Assignments (PSA) in recent weeks have shown fabulous dedication towards these exams, which in some subjects can be up to 60% of the final grade.

After half term we will be continuing to prepare for the Mock examination and provide students with guidance on how to plan their revision for all subjects. Some of this work started with the recent Parent meeting to work in partnership with yourself and support your son/daughter.

Next term also allows students to look forward to their Christmas celebration and the official launch to the end of year school Prom.

Thank you for your continued support

**Mr Ward**  
Head of Year 11

## KEY DATES

**Monday 11th November**  
**SDCC Remembrance Service**

**Friday 15th November**  
**Children in Need**

**Monday 25th November**  
**Year 11 Mock Exams**

**Friday 20th December**  
**End of Term**





# CURRICULUM OVERVIEW

SDCC Year 11 Curriculum	HALF TERM 2
Maths	<p><b>Foundation:</b> Students are able to apply their algebraic understanding complex problems including trigonometry and vectors.</p> <p><b>Higher:</b> Students learn to use previously develop algebraic skills for complex graphs, non-linear simultaneous equations and an increased understanding of proof</p>
English Language & Literature	<p>Poetry of power and conflict. Students learn how to analyse poems. The poems have a wide range of contexts from Romanticism to the Crimean War, World War 1, the Vietnam war, the troubles in Northern Ireland.</p>
Combined Science	<p>Biology: Homeostasis and the nervous system</p> <p>Chemistry: Revision of previous topics</p> <p>Physics: Revision of previous topics</p>
French	<p>Jobs and future plans</p>
Geography	<p><b>The Changing UK Economy</b></p> <p>The post-industrial economy, science and business parks, changing transport infrastructure and rural landscapes. The North South divide and trade with Europe / the wider world. Students engage in a UK based unit of study which focuses their learning on economic factors that affect the UK. Students learn about specific UK developments such as HS2 and Liverpool2, considering their advantages and disadvantages.</p>

# CURRICULUM OVERVIEW

<b>Art</b>	<p>Students focus on developing personal outcomes based on their investigations. The aim of this unit of work is for the student to independently explore the creative process, developing the skills required for the exam unit.</p>
<b>Computer Science</b>	<p style="text-align: center;"><b>2.2 Programming Fundamentals</b></p> <p>Students will cover the fundamentals of programming from a 'theoretical' point of view. By this point in the course, students will be confident programmers and will be able to make the links between the topics covered and their practical experience from coding regularly in Year 10 and 11. Many of these topics will be covered through the course of their studies already.</p> <p style="text-align: center;"><b>Practical Programming</b></p> <p>Students will develop an understanding of the use of string manipulation techniques.</p> <p style="text-align: center;"><b>MOCK Exam</b></p> <p>During the course of Term 1, students will complete a MOCK exam based on content covered so far.</p>
<b>IT</b>	<p style="text-align: center;"><b>Component 2 Assessment</b> Students prepare for and complete the Pearson Set Assignment (PSA) for Component 2</p>
<b>Drama</b>	<p><b>Comp 2: Pearson Set Assignment (PSA)</b> Practical realisation of an extended section of script developed to a level 2 standard. Students will work with a play, developing their stage blocking and characterisation, whilst also keeping an up-to-date logbook which details their progress. Supporting evidence: Logbook, Skills audit, practical performance exam and written evaluation.</p>
<b>Food Technology/Catering</b>	<p>Unit 2 assessment: students will be given a brief and will be expected to choose 2 dishes, explain why they have chosen them based on their nutritional content and the customers in the brief. They will then discuss why they have chosen these dishes based on factors affecting menu choices and produce a detailed, dovetailed timeplan which they will use to prepare 2 dishes. They will then need to evaluate the dishes they have produced and their own performance</p>

# CURRICULUM OVERVIEW

<p><b>Modern Britain</b></p>	<p><b>Rule of Law and Democracy</b> - Students will concentrate on their GCSE paper 1 and 2. They will understand Paper 2 Theme D - Peace and Conflict and be able to look at views regarding reasons for conflicts in the world and the importance of peace. Our content will cover a Just war and Holy war and look at various views surrounding the fighting of war and justified reasons for it. We will understand the role of pacifists and the response to victims of war. For Paper 1, students will learn about Christianity, teachings, beliefs and practices and understand how different religious people live in our society. The tolerance and mutual respect that as neighbours we can live in harmony.</p>
<p><b>Music</b></p>	<p><b>Btec Music Component 2 BRIEF - Continued</b> - Students now begin a more in depth analysis of the composition process, focusing on the using of Music Tech to create their own detailed compositions. They begin to work on a detailed rehearsal and technical skills plan to ensure their performances are ready for their midway and final performances at Livewire, Saltash, in December.</p>
<p><b>PE and Health</b></p>	<p>Demonstrate ways to improve participants sporting techniques / Controlled Assessment Two</p>
<p><b>PSE/RSE</b></p>	<p>RSHE students will explore the religious views on attitude to wealth and giving money to the poor. Students will learn about the role of women in religion and follow religions through human rights and social justice.</p>
<p><b>Business</b></p>	<p>Students focus on understanding the 4P's - Product, Price, Place Promotion. With each element there will be in-depth knowledge about each</p>
<p><b>Child Development</b></p>	<p>In this half term students will improve their PSA tasks after initial marking. In December they will continue to learn the content for Component 3.</p>

# CURRICULUM OVERVIEW

<b>Health and Social Care</b>	<p>In this half term students will improve their PSA tasks after initial marking. In December they will continue to learn the content for Component 3 learning about physiological and lifestyle indicators.</p>
<b>Media</b>	<p>Component 2 Pearson Set Assignment - Developing Digital Media Production Skills Task 2; Develop and apply media production and post-production processes, skills and techniques to create a media product; shooting a video production; video editing; testing, reviewing and refining practical work; exporting media product for digital distribution, writing a log</p>
<b>Sociology</b>	<p>Revision of Crime and Deviance with a particular focus on the role of the Media, prisons and young offenders</p>
<b>Travel and Tourism</b>	<p><b>Component 2 Assessment</b> Students prepare for and complete the Pearson Set Assignment (PSA) for Component 2</p>

# HOME LEARNING - KS4

EVERY MOMENT  
MATTERS

WE ARE  
#TEAM SDCC

## Year 11 Homework Timetable

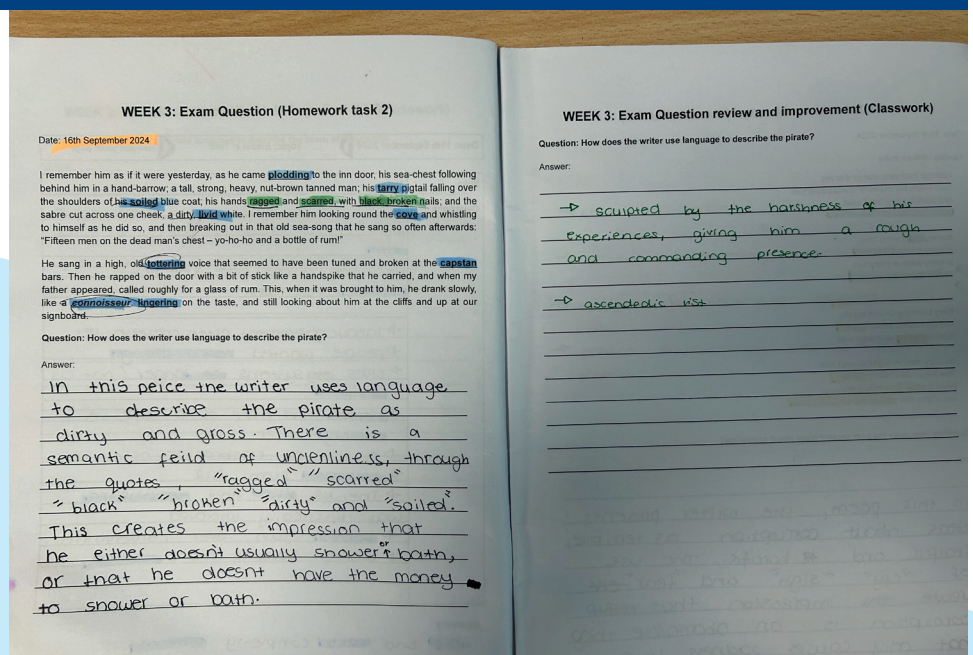
<b>Monday</b>	Science Task 1	Ebacc Option A Task 1	Option C Task 1
<b>Tuesday</b>	Sparx Science	Option B Task 1	Sparx Maths
<b>Wednesday</b>	English Task 1	Science Task 2	Option C Task 2
<b>Thursday</b>	Ebacc Option A Task 2	Option B Task 2	Sparx Catch Up
<b>Friday</b>	Sparx Science	English Task 2	Sparx Maths

Support is available:

Students are supported with their written homework each morning during their tutor sessions, but additional support for homework can be found in En1 before school starts.

Support for online Homework takes place each break-time in En4, and after school for each of the Core subjects.

## KS4 HOMEWORK EXAMPLE





# CLUBS

## AUTUMN 2024



### EVERYDAY

#### FOOTBALL

*Who?* All years | *Where?* Astro  
*When?* Before School

#### CAMPUS RADIO

*Who?* All years | *Where?* TBC  
*When?* Break A & B

### MONDAY

#### ROCK CLUB

*Who?* All years | *Where?* PA 2  
*When?* 3-4pm

#### SIGN LANGUAGE

*Who?* All years | *Where?* GF01  
*When?* Break A

#### PRODUCTION DANCE

*Who?* All years | *Where?* PA1  
*When?* 3.10-5pm

### MONDAY, TUESDAY, THURSDAY & FRIDAY

#### BADMINTON CLUB

*Who?* All years | *Where?* Sports hall  
*When?* Break A

### MONDAY, TUESDAY & FRIDAY

#### BASKETBALL/NETBALL

*Who?* All years | *Where?* Sports hall  
*When?* Break B

### TUESDAY

#### SDCC SINGERS

*Who?* All years | *Where?* PA4  
*When?* 3-4pm

#### CONTEMPORARY MUSIC CLUB

*Who?* KS4 Musicians  
(on BTEC course) | *Where?* PA2  
*When?* 3-4pm

#### COOKING CLUB

*Who?* Years 7 & 8 | *Where?* Fn1  
*When?* 3-4pm

#### RUGBY

*Who?* All years | *Where?* Astro/Central Park  
*When?* 3.10-4pm

#### NETBALL

*Who?* Years 7 & 8 | *Where?* Sports Hall/  
Netball Courts  
*When?* 3.10-4pm

#### FOOTBALL

*Who?* Year 9 | *Where?* Astro  
*When?* 3.10-4pm

#### TEXTILES: DIY FASHION

*Who?* All years | *Where?* VA2  
*When?* 3.10-4pm

#### DIGITAL AMBASSADORS

*Who?* All years | *Where?* CT2  
*When?* 3.10-4pm

#### MONEY MATTERS

*Who?* Years 8-13 | *Where?* EB12  
*When?* 3.10-4pm

#### ECO COUNCIL

*Who?* Years 7-13 | *Where?* EB15  
*When?* Break B

#### PRODUCTION ACTING

*Who?* All years | *Where?* Theatre  
*When?* 3.10-5pm

#### MODERN BRITAIN

#### DEBATING CLUB

*Who?* All years | *Where?* EB10  
*When?* 3.10-4pm

#### THE CONTEMPORARY MUSIC CLUB

*Who?* Years 9-11 | *Where?* PA2  
*When?* 3.15-4.15pm

#### POKEMON

*Who?* All years | *Where?* CT1  
*When?* Break B

### TUESDAY & WEDNESDAY

#### FITNESS

*Who?* Years 7 & 8 | *Where?* FT1  
*When?* 3.10-4pm

### TUESDAY, WEDNESDAY & THURSDAY

#### HOMEWORK

*Who?* Years 7, 8 & 9 | *Where?* Study Zone  
*When?* 3.10-4pm

#### FITNESS SUITE

*Who?* Years 9 & 10 | *Where?* Fitness Suite  
*When?* 3.10-4pm

### WEDNESDAY

#### NEEDLE POINT

*Who?* All years | *Where?* Ma9  
*When?* 3-4pm

#### NETBALL

*Who?* All years | *Where?* Netball Courts  
*When?* 3.10-4pm

#### BASKETBALL

*Who?* Years 7, 8 & 9 | *Where?* Sports Hall  
*When?* 3.10-4pm

#### FOOTBALL

*Who?* Years 7 | *Where?* Astro  
*When?* 3.10-4pm

#### ART AND CLAY CLUB

*Who?* All years | *Where?* VA3  
*When?* 3.10-4pm

#### PHOTOGRAPHY CLUB

*Who?* All years | *Where?* VA1  
*When?* 3.10-4pm

#### PRODUCTION SINGERS

*Who?* All years | *Where?* PA2  
*When?* 3.10-4.30pm

#### PARAGON MATHS

*Who?* Years 7 & 8 Week A  
Years 9 & 10 Week B | *Where?* MA5  
*When?* 3.10-4pm

#### MINDFULNESS CLUB

*Who?* All years | *Where?* EB4  
*When?* Break B

### THURSDAY

#### KEYBOARD CLUB

*Who?* All years | *Where?* PA2  
*When?* 3-4pm

#### GIRLS FOOTBALL

*Who?* Years 7, 8 & 9 | *Where?* Astro  
*When?* 3.10-4pm

#### STEAM

*Who?* All years | *Where?* CT1  
*When?* 3.10-4pm

#### PRODUCTION ACTING

*Who?* All years | *Where?* Theatre  
*When?* 3.10-5pm

#### PRODUCTION DIGITAL MARKETING

*Who?* All years | *Where?* CT3  
*When?* 3.10-4pm

#### MEDIA CLUB

*Who?* Years 7-10 | *Where?* VA5  
*When?* 3.10-4pm

#### LGBTQIA+ CLUB

*Who?* All years | *Where?* EN2  
*When?* Break B

#### FOOTBALL

*Who?* Years 8 | *Where?* Sports hall  
*When?* 3.10-4pm

### FRIDAY

#### FURTHER MATHS

*Who?* Year 11 set 1s only | *Where?* TBC  
*When?* 3-4pm

#### BOOK CLUB

*Who?* KS3 | *Where?* Library  
*When?* Break A

Aspire **ACHIEVE** Thrive

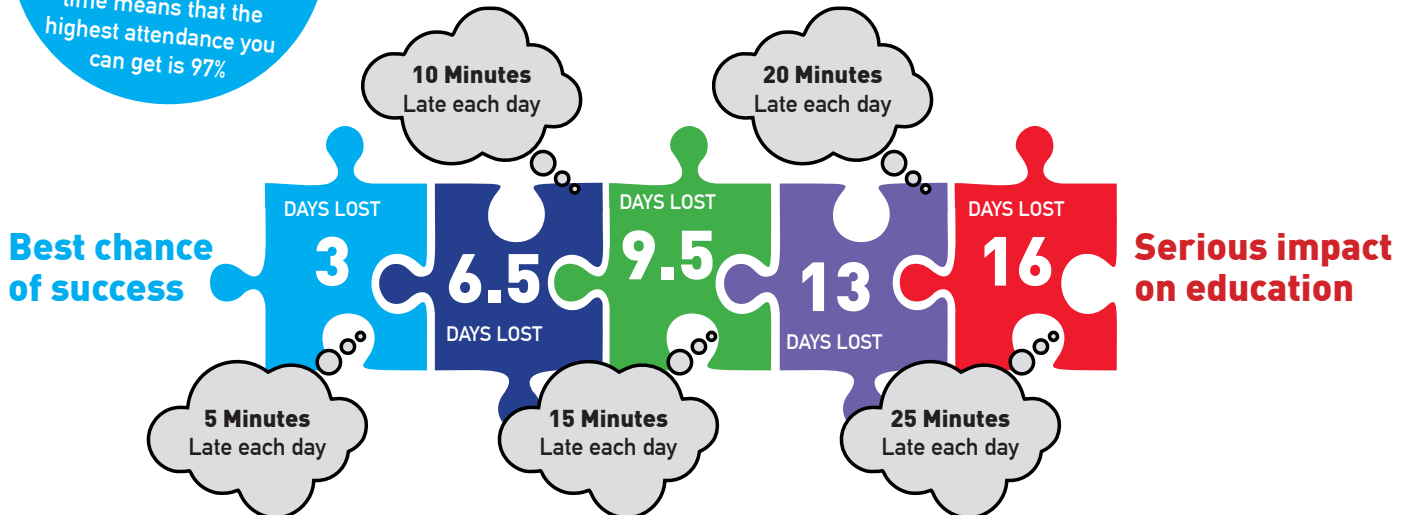
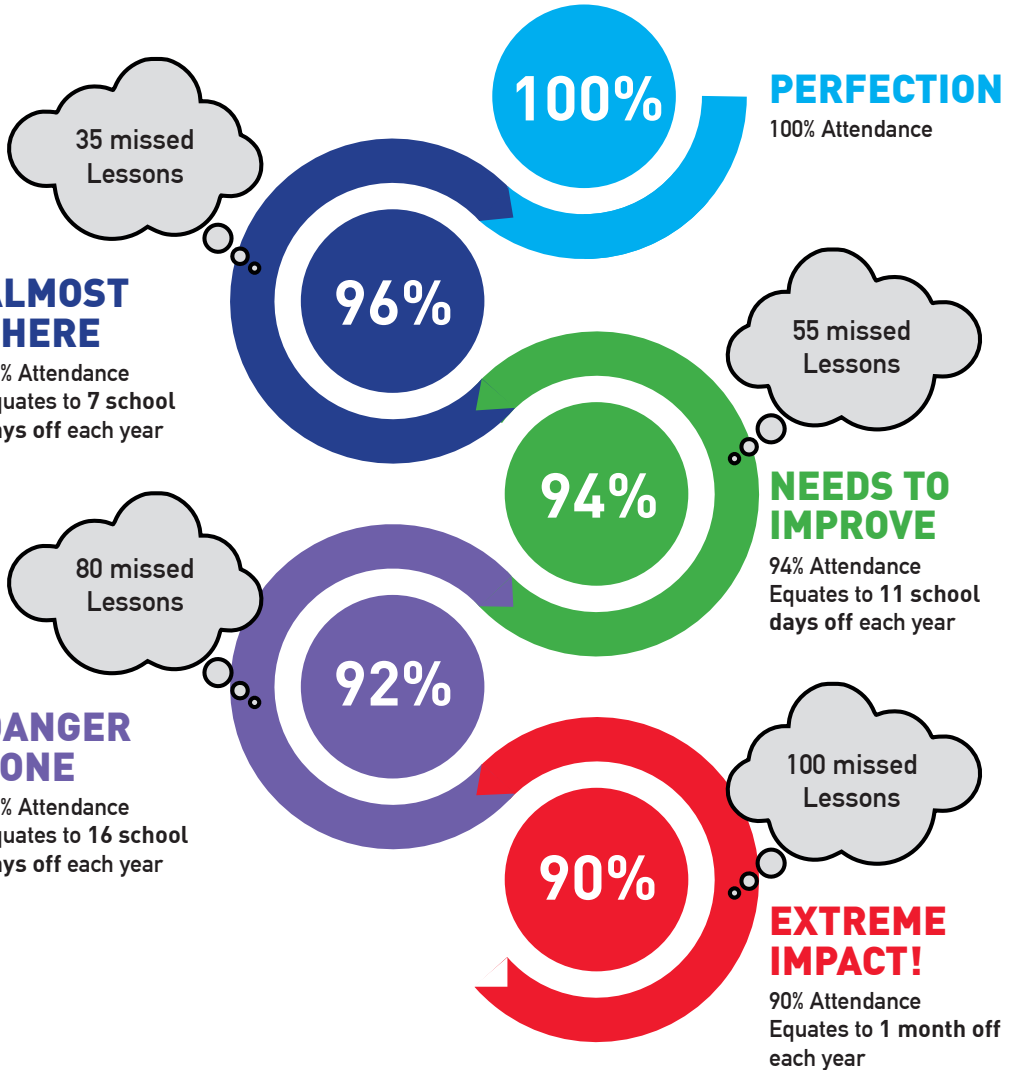
# Attendance Matters

## #EVERYDAYCOUNTS

**Medical Appointments**  
When possible book them outside of school hours

**90% Attendance**  
or less can reduce your chances of good outcomes by half

**Family Holidays**  
You have 175 days a year where you are not in school. A one-week holiday in term time means that the highest attendance you can get is 97%



**Average learning hours per day is 5 hours.**  
**If you are 15 minutes late each day you will have missed 2 full weeks of school in 1 year!**